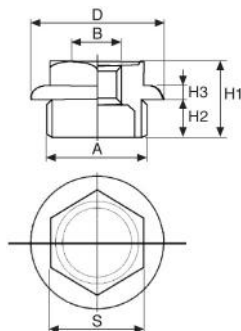


G1011



## 103

**TAPPO VERNICIATO SU BASE ZINCATA SERIE 1" CON FLANGIA PIANA Ø 42**



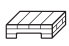
- GALVANIZED AND PAINTED PLUG RANGE 1" WITH PLANE FLANGE Ø 42
- VERZINKT UND LACKIERTE STAHLSTOPFEN 1" MIT GLATTFLANSCH Ø 42
- BOUCHON RADIATEURS GALVANISÉ ET VERNIS, SERIE 1" BRIDE PLATE Ø 42
- TAPÓN GALVANIZADO/PINTADO SERIE 1" CON BRIDA Ø 42 PLANA

**THREAD:** ISO 228/1 (ex DIN 259)

**USE:** radiatori alluminio / aluminum radiators

**RECOMMENDED SEAL:** senza amianto/asbestos free art. 950/A sp. 2 mm

**COLOUR:** RAL 9010

CODE	A inch	B inch	Version	D mm	H1 mm	H2 mm	H3 mm	S mm				€
103100001	1"	-	dx	42	22,6	12,6	4	28	103	40	7280	2,17
103100002	1"	-	sx	42	22,6	12,6	4	28	103	40	7280	2,17
103100181	1"	1/8"	dx	42	22,6	12,6	4	28	100	40	7280	2,58
103100182	1"	1/8"	sx	42	22,6	12,6	4	28	100	40	7280	2,58
103100141	1"	1/4"	dx	42	22,6	12,6	4	28	96	40	7280	2,58
103100142	1"	1/4"	sx	42	22,6	12,6	4	28	96	40	7280	2,58
103100381	1"	3/8"	dx	42	22,6	12,6	4	28	92	40	7280	2,58
103100382	1"	3/8"	sx	42	22,6	12,6	4	28	92	40	7280	2,58
103100121	1"	1/2"	dx	42	22,6	12,6	4	28	89	40	7280	2,99
103100122	1"	1/2"	sx	42	22,6	12,6	4	28	89	40	7280	2,99
103100341	1"	3/4"	dx	42	22,6	12,6	4	32	72	40	7280	4,55
103100342	1"	3/4"	sx	42	22,6	12,6	4	32	72	40	7280	4,55

La garanzia della tenuta dei tappi vale soltanto con le guarnizioni consigliate da RM.  
The guarantee of plugs seal is valid only with the recommended gasket by RM.