

Components

	Components	Pcs	Material
1	Body	1	UNI EN 12165 CW617N
2	End sleeve	1	UNI EN 12165 CW617N
3	Ball	1	UNI EN 12165 CW617N UNI EN 12164 CW617N
4	Ball seal seats	2	P.T.F.E.
5	Stem	1	UNI EN 12164 CW617N
6	Stem seal O-Ring	2	NBR 70 Sh A (ASTM D 2240)
7	Steel lever handle	1	Steel ZN, plastic-covered
	Butterfly	1	AL, painted
	Cap	1	UNI EN 12165 CW617N UNI EN 12164 CW617N
8	Nut	1	Zinc-plated Steel
	Screw	1	Zinc-plated Steel
9	Anti-friction ring	1	P.T.F.E.

EN GENERAL CHARACTERISTICS

Bore: Full
 Range: From 1/4" to 2"
 Female fitting: Thread UNI EN 10226 (UNI EN ISO 7/1 Rp) (DIN2999)
 Male fitting: Thread UNI EN 10226 (UNI EN ISO 7/1 R) (DIN2999)
 Tang and nut: Thread UNI EN ISO 228/1 (DIN 259)
 Functioning: 90° degrees rotation of operating device.
 Operating device: Plastified steel Lever handle, aluminium Butterfly, Cap.

OPERATING CONDITIONS

Operating temperature: from -20 °C to +60 °C
 Operating pressure: MOP 5 Classe B0,1

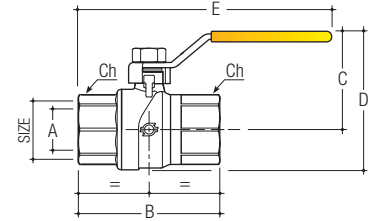
Valves must be used in fully open or fully closed position.

These valves are suitable for use with the three classes of gases (methane, gas mains, GPL), for low and medium pressure distribution mains and plants; for special uses (in compliance with the pressures set out for these valves) see chemical compatibility chart in the technical annexes of the applicable catalogue. Items included in the CE marking, as per Art. 4 Paragraph 3 of the Directive 2014/68/EU.

GP 2235
FUTURGAS



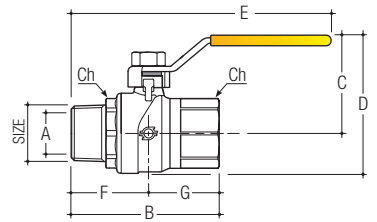
Ball valve for gas nickel-plated, Female-Female fitting, with yellow plastified steel Lever handle.



CODE	Size	A mm	B mm	C mm	D mm	E mm	DN mm	Ch mm	gr	Pack pcs/box	Master pcs/box
8200R002	1/4"	10	45,6	39,6	52,4	107,3	8	20	154	36	144
8200R003	3/8"	10	47,2	39,6	52,4	108,2	10	20	158	36	144
8200R004	1/2"	15	56,7	43,2	58,6	112,9	15	25	195	36	144
8200R005	3/4"	20	66,9	47	66	118	20	31	297	24	96
8200R006	1"	25	81,3	57,6	80,4	151	25	38	495	12	48
8200R007	1"1/4	32	96	63,1	91,6	158,2	32	47	700	8	32
8200R008	1"1/2	40	104	74,2	108,3	192,4	40	53	1070	4	16
8200R009	2"	50	127	82,3	124,6	203,9	50	66	1755	4	16

GP 2235

Ball valve for gas nickel-plated, Male-Female fitting, with yellow plastified steel Lever handle.

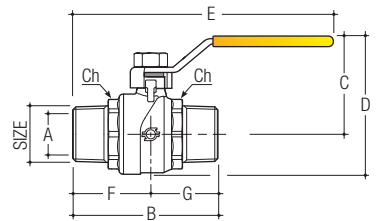


CODE	Size	A mm	B mm	C mm	D mm	E mm	F mm	G mm	DN mm	Ch mm	gr	Pack pcs/box	Master pcs/box
8201R002	1/4"	10	51,4	39,6	52,4	113,2	28,6	22,8	8	20	154	36	144
8201R003	3/8"	10	52,7	39,6	52,4	113,7	29,1	23,6	10	20	158	36	144
8201R004	1/2"	15	60,4	43,2	58,6	116,6	32,1	28,4	15	25	195	36	144
8201R005	3/4"	20	70,3	47,0	66,0	121,4	36,8	33,5	20	31	297	24	96
8201R006	1"	25	83,7	57,6	80,4	153,4	43,2	40,5	25	38	495	12	48
8201R007	1"1/4	32	98,2	63,1	91,6	160,4	50,2	48,0	32	47	700	8	32
8201R008	1"1/2	40	110,6	74,2	108,3	199,0	58,6	52,0	40	53	1070	4	16
8201R009	2"	50	135,1	82,3	124,6	212,0	71,6	63,5	50	66	1755	4	16

GP 2235
FUTURGAS



Ball valve for gas nickel-plated, Male-Male fitting, with yellow plastified steel Lever handle.

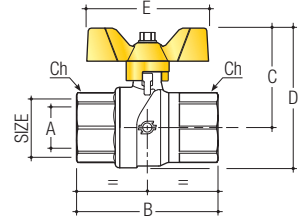


CODE	Size	A mm	B mm	C mm	D mm	E mm	F mm	G mm	DN mm	Ch mm	gr	Pack pcs/box	Master pcs/box
8202R004	1/2"	15	60,9	43,2	58,6	116,6	32,1	28,8	15	25	194	36	144
8202R005	3/4"	20	71,3	47,0	66,0	121,4	36,8	34,5	20	31	288	24	96
8202R006	1"	25	83,2	57,6	80,4	153,4	43,2	40,0	25	38	467	12	48

GP 2235
FUTURGAS



Ball valve for gas nickel-plated, Female-Female fitting, with yellow painted aluminium Butterfly handle.

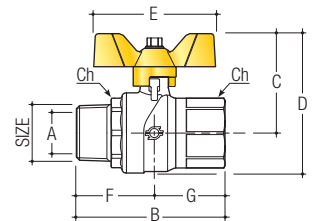


CODE	Size	A mm	B mm	C mm	D mm	E mm	DN mm	Ch mm	gr	Pack pcs/box	Master pcs/box
8203R002	1/4"	10	45,6	42,3	55,1	60,2	8	20	159	36	144
8203R003	3/8"	10	47,2	42,3	55,1	60,2	10	20	152	36	144
8203R004	1/2"	15	56,7	44,8	60,2	60,2	15	25	175	36	144
8203R005	3/4"	20	66,9	48,6	67,7	60,2	20	31	275	24	96
8203R006	1"	25	81,3	54,5	77,3	65,0	25	38	470	12	48
8203R007	1"1/4	32	96,0	60,0	88,5	65,0	32	47	685	8	32

GP 2235
FUTURGAS



Ball valve for gas nickel-plated, Male-Female fitting, with yellow painted aluminium Butterfly handle.

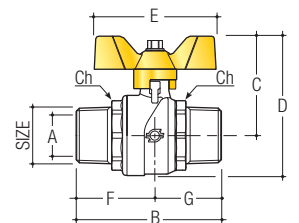


CODE	Size	A mm	B mm	C mm	D mm	E mm	F mm	G mm	DN mm	Ch mm	gr	Pack pcs/box	Master pcs/box
8204R002	1/4"	10	51,4	42,3	55,1	60,2	28,6	22,8	10	20	159	36	144
8204R003	3/8"	10	52,7	42,3	55,1	60,2	29,1	23,6	10	20	152	36	144
8204R004	1/2"	15	60,4	44,8	60,2	60,2	32,0	28,4	15	25	190	36	144
8204R005	3/4"	20	70,3	48,6	67,7	60,2	36,8	33,5	20	31	285	24	96
8204R006	1"	25	83,7	54,5	77,3	65,0	43,2	40,5	25	38	495	12	48
8204R007	1"1/4	32	98,2	60,0	88,5	65,0	50,2	48,0	32	47	710	8	32

GP 2235
FUTURGAS



Ball valve for gas nickel-plated, Male-Male fitting, with yellow painted aluminium Butterfly handle.

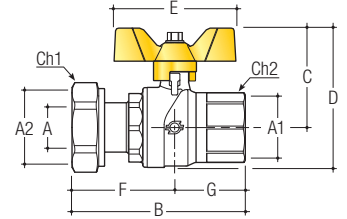


CODE	Size	A mm	B mm	C mm	D mm	E mm	F mm	G mm	DN mm	Ch mm	gr	Pack pcs/box	Master pcs/box
8205R004	1/2"	15	60,9	44,8	60,2	60,2	32,1	28,8	15	25	185	36	144
8205R005	3/4"	20	71,3	48,6	67,7	60,2	36,8	34,5	20	31	295	24	96
8205R006	1"	25	83,2	54,5	77,3	65,0	43,2	40,0	25	38	475	12	48

GP 2235
FUTURGAS



Ball valve for gas nickel-plated, Female-Revolving nut fitting, with yellow painted aluminium Butterfly handle.

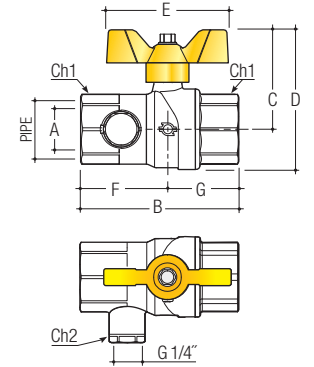


CODE	Size	A mm	A1	A2	B mm	C mm	D mm	E mm	F mm	G mm	DN mm	Ch1/2 mm	gr	Pack pcs/box	Master pcs/box
8206R004	1/2"x3/4"	15	1/2"	3/4"	73,0	44,8	60,2	60,2	44,7	28,4	15	32/25	230	30	120
8206R105	3/4"x3/4"	20	3/4"	3/4"	81,8	48,6	67,7	60,2	48,3	33,5	20	32/31	327	18	72
8206R005	3/4"x1"	20	3/4"	1"	82,3	48,6	67,7	60,2	48,8	33,5	20	38/31	340	18	72
8206R006	1"x1"1/4"	25	1"	1"1/4"	94,0	54,5	77,3	65,0	53,5	40,5	25	47/38	535	12	48

GP 2235
FUTURGAS



Ball valve for gas nickel-plated, Female-Female fitting, with pressure fittings, with yellow painted aluminium Butterfly handle.

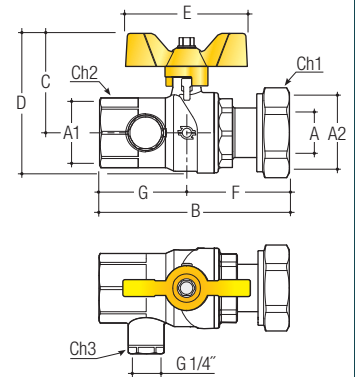


CODE	Size	A mm	B mm	C mm	D mm	E mm	F mm	G mm	DN mm	Ch1/2 mm	gr	Pack pcs/box	Master pcs/box
8207R004	1/2"	15	63,9	44,8	60,2	60,2	28,4	35,5	15	25/15	241	30	120
8207R005	3/4"	20	75,0	48,6	65,1	60,2	33,5	41,5	20	31/15	362	18	72
8207R006	1"	25	89,8	54,5	77,3	65,0	40,8	49,0	25	38/15	554	12	48

GP 2235
FUTURGAS



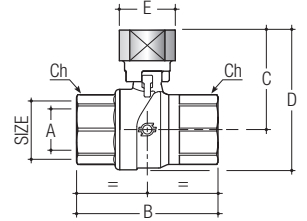
Ball valve for gas nickel-plated, Female-Revolving nut fitting, with pressure fittings, with yellow painted aluminium Butterfly handle.



CODE	Size	A mm	A1 / A2	B mm	C mm	D mm	E mm	F mm	G mm	DN mm	Ch1/2/3 mm	gr	Pack pcs/box	Master pcs/box
8208R005	3/4" x 1"	20	3/4" / 1"	90,3	48,6	67,7	60,2	48,8	41,5	20	38/31/15	410	18	72
8208R006	1" x 1"1/4"	25	1" / 1"1/4"	102,5	54,5	77,3	65	53,5	49,0	25	47/38/15	628	10	40

GP 2235
FUTURGAS

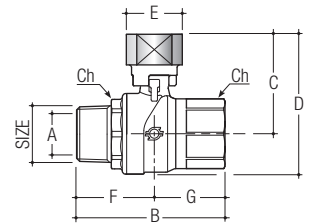
Ball valve for gas nickel-plated, Female-Female fitting, with safety cap and sealable closing.



CODE	Size	A mm	B mm	C mm	D mm	E mm	DN mm	Ch mm	gr	Pack pcs/box	Master pcs/box
8209R004	1/2"	15	56,7	39,9	55,3	26,0	15	25	209	36	144
8209R005	3/4"	20	66,9	43,7	62,8	26,0	20	31	311	24	96
8209R006	1"	25	81,3	53,4	76,2	26,0	25	38	490	12	48
8209R007	1"1/4	32	96,0	58,9	87,4	26,0	32	47	695	8	32

GP 2235
FUTURGAS

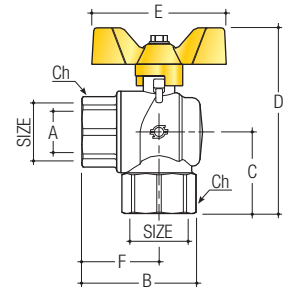
Ball valve for gas nickel-plated, Male-Female fitting, with safety cap and sealable closing.



CODE	Size	A mm	B mm	C mm	D mm	E mm	F mm	G mm	DN mm	Ch mm	gr	Pack pcs/box	Master pcs/box
8210R004	1/2"	15	60,4	39,9	55,3	26,0	32,1	28,4	15	25	204	36	144
8210R005	3/4"	20	70,3	43,7	62,8	26,0	36,8	33,5	20	31	309	24	96
8210R006	1"	25	83,7	53,4	76,2	26,0	43,2	40,5	25	38	505	12	48
8210R007	1"1/4	32	98,2	58,9	87,4	26,0	50,2	48,0	32	47	725	8	32

GP 2235
FUTURGAS

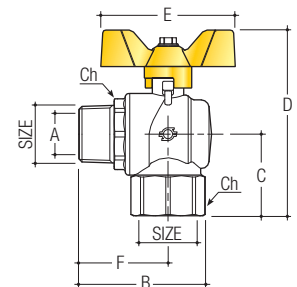
Female-Female ball angle valve for gas, with yellow painted aluminium Butterfly handle.



CODE	Size	A mm	B mm	C mm	D mm	E mm	F mm	DN mm	Ch mm	gr	Pack pcs/box	Master pcs/box
8213R004	1/2" x 1/2"	15	42,7	32,5	77,3	60,2	29,5	15	25	196	36	144
8213R005	3/4" x 3/4"	20	50,9	38,0	86,6	60,2	34,5	20	31	307	24	96
8213R006	1" x 1"	25	61,7	45,0	99,5	65,0	41,5	25	38	505	12	48

GP 2235
FUTURGAS

Female-Male ball angle valve for gas, with yellow-painted aluminium Butterfly handle.

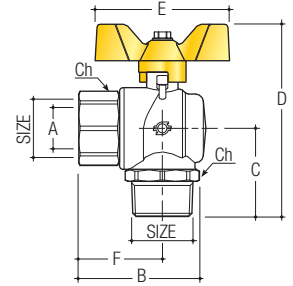


CODE	Size	A mm	B mm	C mm	D mm	E mm	F mm	DN mm	Ch mm	gr	Pack pcs/box	Master pcs/box
8214R004	1/2" x 1/2"	15	50,5	32,5	77,3	60,2	37,3	15	25	208	36	144
8214R005	3/4" x 3/4"	20	57,2	38,0	85,5	60,2	40,8	20	31	319	24	96
8214R006	1" x 1"	25	68,1	45,0	99,5	65,0	47,9	25	38	535	12	48

GP 2235
FUTURGAS



Male-Female ball angle valve for gas,
with yellow-painted aluminium Butterfly handle.

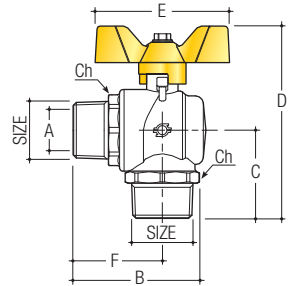


CODE	Size	A mm	B mm	C mm	D mm	E mm	F mm	DN mm	Ch mm	gr	Pack pcs/box	Master pcs/box
8215R004	1/2" x 1/2"	15	42,7	35,0	79,8	60,2	29,5	15	25	198	36	144
8215R005	3/4" x 3/4"	20	50,9	41,4	90,0	60,2	34,5	20	31	309	24	96
8215R006	1" x 1"	25	61,7	47,5	102,0	65,0	41,5	25	38	513	12	48

GP 2235
FUTURGAS



Male-Male ball angle valve for gas,
with yellow-painted aluminium Butterfly handle.

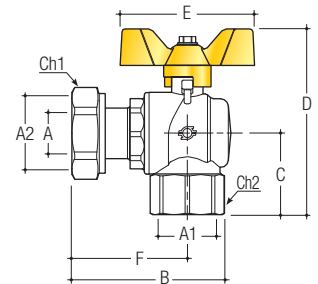


CODE	Size	A mm	B mm	C mm	D mm	E mm	F mm	DN mm	Ch mm	gr	Pack pcs/box	Master pcs/box
8216R004	1/2" x 1/2"	15	50,5	35,0	79,8	60,2	37,3	15	25	210	36	144
8216R005	3/4" x 3/4"	20	57,2	41,4	90,0	60,2	40,8	20	31	321	24	96
8216R006	1" x 1"	25	68,1	47,5	102,0	65,0	47,9	25	38	543	12	48

GP 2235
FUTURGAS



Female-Revolving nut ball angle valve for gas,
with yellow-painted aluminium Butterfly handle.

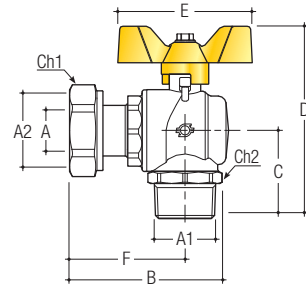


CODE	Size	A mm	A1	A2	B mm	C mm	D mm	E mm	F mm	DN mm	Ch1 mm	Ch2 mm	gr	Pack pcs/box	Master pcs/box
8217R004	1/2"Fx3/4"D	15	1/2"	3/4"	61,0	32,5	77,3	60,2	47,8	15	32	25	253	30	120
8217R105	3/4"Fx3/4"D	20	3/4"	3/4"	68,7	38,0	86,8	60,2	52,3	20	32	31	361	18	72
8217R005	3/4"Fx1"D	20	3/4"	1"	69,2	38,0	86,6	60,2	52,8	20	38	31	370	18	72
8217R006	1"Fx1"1/4D	25	1"	1"1/4"	78,4	45,0	99,5	65,0	58,2	25	47	38	580	10	40

GP 2235
FUTURGAS



Male-Revolving nut ball angle valve for gas, with yellow-painted aluminium Butterfly handle.

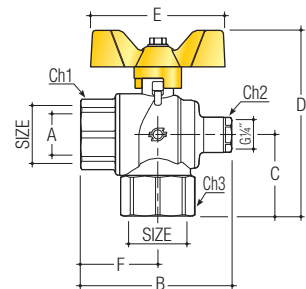


CODE	Size	A mm	A1	A2	B mm	C mm	D mm	E mm	F mm	DN mm	Ch1 mm	Ch2 mm	gr	Pack pcs/box	Master pcs/box
8218R004	1/2" Mx 3/4" D	15	1/2"	3/4"	61,0	35,0	79,8	60,2	47,8	15	32	25	253	30	120
8218R105	3/4" Mx 3/4" D	20	3/4"	3/4"	68,7	41,4	90,0	60,2	52,3	20	32	31	364	18	72
8218R005	3/4" Mx 1" D	20	3/4"	1"	69,2	41,4	90,0	60,2	53,0	20	38	31	374	18	72
8218R006	1" Mx 1 1/4" D	25	1"	1 1/4"	78,4	47,5	102,0	65,0	58,2	25	47	38	580	10	40

GP 2235
FUTURGAS



Ball angle valve for gas nickel-plated, Female-Female fitting, with pressure attachment, with yellow-painted aluminium Butterfly handle.

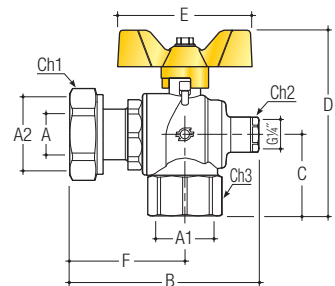


CODE	Size	A mm	B mm	C mm	D mm	E mm	F mm	DN mm	Ch1/2/3 mm	gr	Pack pcs/box	Master pcs/box
8219R005	3/4"	20	68,5	38,0	86,6	60,2	34,5	20	31/15/31	440	18	72
8219R006	1"	25	80,0	45,0	99,5	65,0	41,5	25	38/15/38	540	10	40

GP 2235
FUTURGAS



Ball angle valve for gas nickel-plated, Female-Female revolving nut fitting, with pressure attachment, with yellow-painted aluminium Butterfly handle.



CODE	Size	A mm	A1	A2	B mm	C mm	D mm	E mm	F mm	DN mm	Ch1/2/3 mm	gr	Pack pcs/box	Master pcs/box
8220R005	3/4" x 1"	20	3/4"	1"	86,8	38,0	86,6	60,2	52,8	20	38/15/31	383	16	64
8220R006	1" x 1 1/4"	25	1"	1 1/4"	96,7	45,0	99,5	65,0	58,2	25	47/15/38	612	8	32