

DE

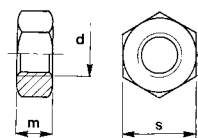
Dado esagonale - DIN 934 - UNI 5588

Hex nut - DIN 934 - UNI 5588



**Zincato bianco
Cl. 8**

White zinc plated
Grade 8



Cod.	d	m	s	Conf. Pkg.
22710b03000	M3	2,4	5,5	2000
22710b04000	M4	3,2	7	2000
22710b05000	M5	4	8	1000
22710b06000	M6	5	10	1000
22710b08000	M8	6,5	13	500
22710b10000	M10	8	17	200
22710b12000	M12	10	19	200
22710b14000	M14	11	22	100
22710b16000	M16	13	24	100
22710b18000	M18	15	27	50
22710b20000	M20	16	30	50
22710b22000	M22	18	32	50
22710b24000	M24	19	36	50
22710b27000	M27	22	41	25
22710b30000	M30	24	46	25

DE - INOX A2

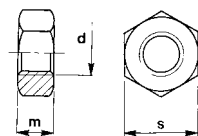
Dado esagonale - DIN 934 - UNI 5588

Hex nut - DIN 934 - UNI 5588



Inox A2 70

Stainless steel A2 70



Cod.	d	m	s	Conf. Pkg.
22750006000	M6	5	10	500
22750008000	M8	6,5	13	200
22750010000	M10	8	17	100
22750012000	M12	10	19	100
22750014000	M14	11	22	100
22750016000	M16	13	24	50

DCA

Dado ad alette

Wing nut

Zincato bianco

White zinc plated



Cod.	Filettatura Thread	Conf. Pkg.
22300b04000	M4	600
22300b05000	M5	600
22300b06000	M6	600
22300b08000	M8	200
22300b10000	M10	200
22300b12000	M12	100